

HOUSE & LAND PACKAGE | Lot 390 Faringdon, Rolleston



\$475,000*

Faringdon, Rolleston

Features:

Get into a brand new house at an affordable price in one of the most sought-after subdivisions in Rolleston!

Featuring 3 generous bedrooms, open plans living/dining designed to trap the sunshine and an outdoor entertaining patio.

This is a Signature Homes House & Land Package. Our packages take the hard work out of building. A new build will take approximately 5-6 months to complete. More information on building with us can be found on our website.

House Size: **140m²**

Section Size: **416m²**

3



2



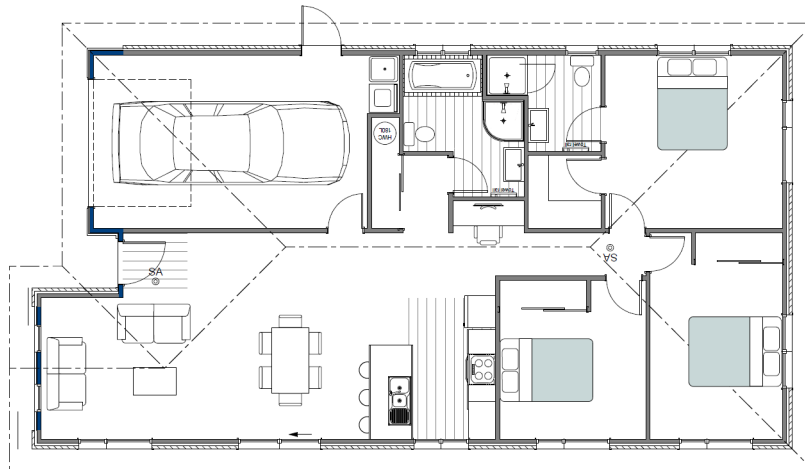
1



1



1



Contact Rhys Gould

New Home Consultant - Christchurch South

Phone: 027 2944000

Email: rhysgould@signature.co.nz

CHRISTCHURCH SOUTH OFFICE

31 Watts Road , Sockburn

*Conditions of offer are subject to change without notice. Designs and drawing are artist's impressions only and won't necessarily reflect the materials the price is based on. Photographs may be of similar homes and specifications may vary from that shown. All images, design and drawings are copyright of Signature Homes Limited ©

Signature
HOMES Est. 1983
YOUR HOME. YOUR WAY.

The Benefits of Building

1

Get an efficient, healthy home made from brand-new products that meet or exceed the current building code.

2

Forget open homes or blowing your budget at auction, you'll get everything you want in a home for a price we determine before you sign a build contract.

3

Get the house you've always wanted in the setting of your choice, build with no hassle. We manage all the design, consent & build process for you.

4

Create a space that's perfectly in tune with your lifestyle, whether you're starting a family, downsizing for retirement or somewhere in between.

5

Avoid unpredictable and costly renovations. Enjoy your home from the moment you first step inside.

6

Enjoy the peace of mind that comes with firm and final pricing, reliable timeframes and guarantees during the build and after you have moved in.

Our Building Guarantees



Home Completion Guarantee Your payments to us are 100% secure, ensuring that you receive your new home.



Completion Date Guarantee When we tell you which day you can move in to your new home, we mean it.



Ten Year Weathertightness Guarantee We have great faith in our builders and the products we use. Your new home will stand the test of time.



Total Price Guarantee At Signature Homes, we guarantee the price we give you during the design and build process.



Ten Year Structural Guarantee Your new home will stand the test of time.



No Hidden Extras Guarantee We believe the price we give you up front, should be the same price you pay.



Two Year Maintenance Guarantee One of the best things about moving in to a brand new home is the fact that you don't have to fix anything up.



Satisfaction Guarantee Ensuring you are delighted with your new home.



House & Land Planning and Build Process



Meet Your New Home Consultant



Site Visit



Design Workshop



Sign Building Contract & Pay Deposit



Meet Your Construction Project Manager



We Manage Consents & Build Your New Home



Move In

*Conditions of offer are subject to change without notice. Designs and drawing are artist's impressions only and won't necessarily reflect the materials the price is based on. Photographs may be of similar homes and specifications may vary from that shown. All images, design and drawings are copyright of Signature Homes Limited ©

Signature HOMES Est. 1983

YOUR HOME. YOUR WAY.