

# HOUSE & LAND PACKAGE | Location counts in Rolleston



Artist Impression Only

**\$462,485\***

Lot 42 Broadfields Drive, Urban Estates, Rolleston

## Features:

This house has it all - street appeal, easy care section, location, classic kiwi plan. Ready to be built. Opportunity to choose colours. Enjoy the ease of purchasing a House and Land package with Signature Homes.

House Size: **142m<sup>2</sup>**

Section Size: **450m<sup>2</sup>**

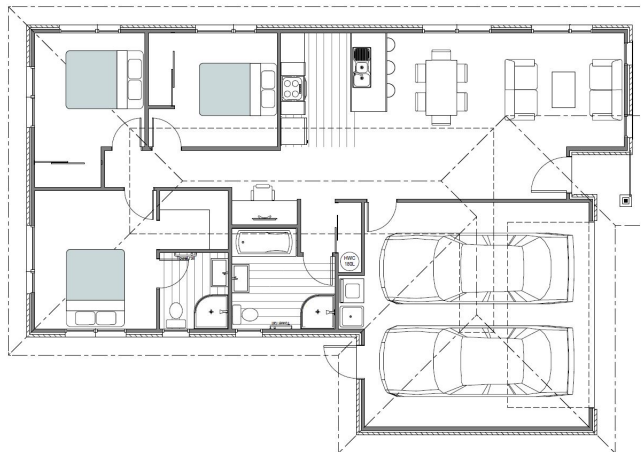
3 

2 

1 

2 

1 



## Contact Debbie Ryan

New Home Consultant - Christchurch South

Phone: 0272409798

Email: [debbieryan@signature.co.nz](mailto:debbieryan@signature.co.nz)

## CHRISTCHURCH SOUTH OFFICE

31 Watts Road , Sockburn

\*Conditions of offer are subject to change without notice. Designs and drawing are artist's impressions only and won't necessarily reflect the materials the price is based on. Photographs may be of similar homes and specifications may vary from that shown. All images, design and drawings are copyright of Signature Homes Limited ©

*Signature*  
**HOMES** EST. 1983  
YOUR HOME. YOUR WAY.

# The Benefits of Building

1

**Get an efficient, healthy home** made from brand-new products that meet or exceed the current building code.

2

**Forget open homes** or blowing your budget at auction, you'll get everything you want in a home for a price we determine before you sign a build contract.

3

**Get the house you've always wanted** in the setting of your choice, build with no hassle. We manage all the design, consent & build process for you.

4

**Create a space** that's perfectly in tune with your lifestyle, whether you're starting a family, downsizing for retirement or somewhere in between.

5

**Avoid unpredictable** and costly renovations. Enjoy your home from the moment you first step inside.

6

**Enjoy the peace of mind** that comes with firm and final pricing, reliable timeframes and guarantees during the build and after you have moved in.

## Our Building Guarantees



**Home Completion Guarantee** Your payments to us are 100% secure, ensuring that you receive your new home.



**Completion Date Guarantee** When we tell you which day you can move in to your new home, we mean it.



**Ten Year Weathertightness Guarantee** We have great faith in our builders and the products we use. Your new home will stand the test of time.



**Total Price Guarantee** At Signature Homes, we guarantee the price we give you during the design and build process.



**Ten Year Structural Guarantee** Your new home will stand the test of time.



**No Hidden Extras Guarantee** We believe the price we give you up front, should be the same price you pay.



**Two Year Maintenance Guarantee** One of the best things about moving in to a brand new home is the fact that you don't have to fix anything up.



**Satisfaction Guarantee** Ensuring you are delighted with your new home.



## House & Land Planning and Build Process



**Meet Your New Home Consultant**



**Site Visit**



**Design Workshop**



**Sign Building Contract & Pay Deposit**



**Meet Your Construction Project Manager**



**We Manage Consents & Build Your New Home**



**Move In**

\*Conditions of offer are subject to change without notice. Designs and drawing are artist's impressions only and won't necessarily reflect the materials the price is based on. Photographs may be of similar homes and specifications may vary from that shown. All images, design and drawings are copyright of Signature Homes Limited ©

*Signature*  
**HOMES** Est. 1983

YOUR HOME. YOUR WAY.